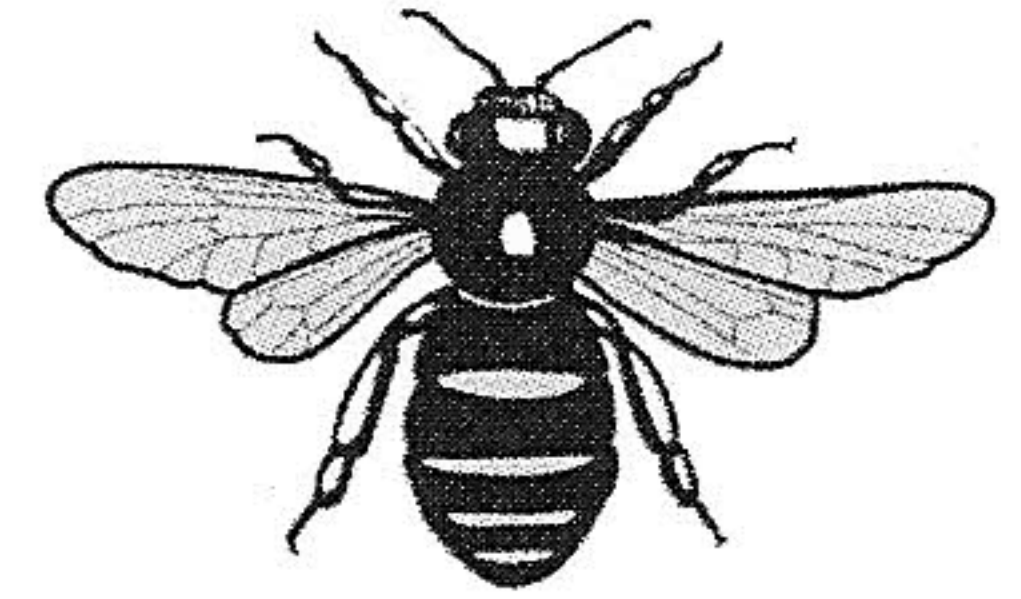


Town Clerk: Jon Wild

Telephone: 01928 735150
Email: council@frodsham.gov.uk
Website: www.frodsham.gov.uk

Frodsham Town Council

Castle Park, Frodsham,
Cheshire WA6 6SB



Mr P Vickery

28 October 2013

ALLOTMENTS

Please forgive my using you as a point of contact for the allotment holders at your location. This is simply because you are well known to us, and I hoped you would not mind! Please do let me know if you would rather I dealt with this matter in some other way.

The Council has been holding discussions regarding the future of the allotments. They obviously want to see them continue to thrive, and to ensure they are secure for the future. We currently charge a rental, and carry out certain maintenance work. Obviously we would hope to keep costs down for allotment holders. But we do need to cover our costs.

With this in mind, the Council have been considering whether a more viable /preferable way forward would be to offer the tenure of the allotments to the allotment holders, for a nominal price. The allotments then would be vested in a committee for each allotment, and they would deal with all matters relating to maintenance, upkeep etc. An alternative might be to sell to the Committee on a leasehold basis, subject to a condition to ensure basic maintenance.

I wonder if in the first place we might arrange a meeting with your allotment holders? I would be happy to arrange this. We can then get all views together before any decisions are made.

Perhaps you could let me know what you think. If you are agreeable to this idea, perhaps you could suggest a good time? The Council's office here may not be big enough: in which case I will hire a room. I can then send you a notice to display at the allotments.

I am writing in similar terms to selected holders of all allotments in Frodsham. We have an option to hold one large meeting. My view is that people may find it easier to speak at three small ones. But again, I would be interested to know what you think.

Jon Wild

Town Clerk